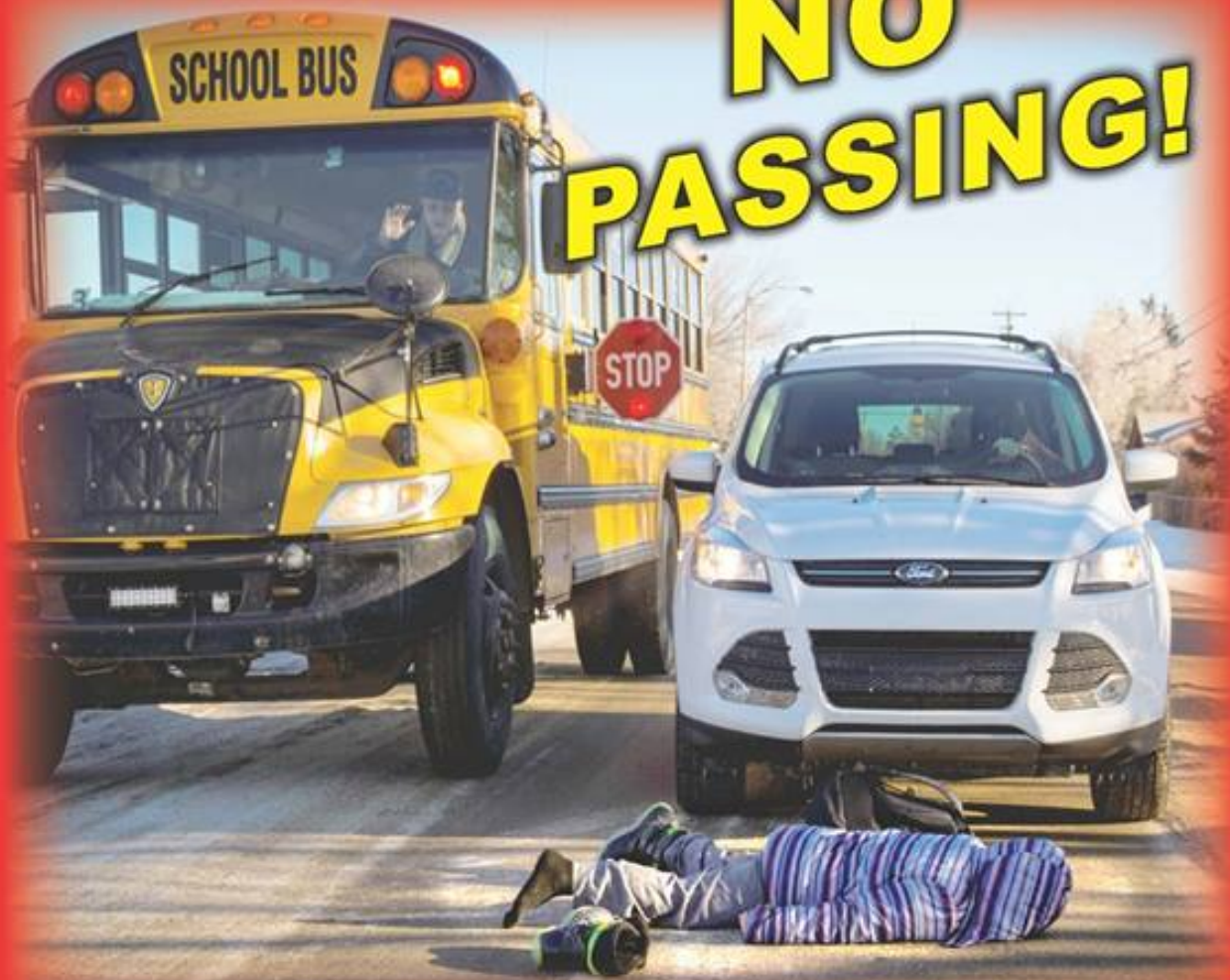


**REDS FLASHING
NO
PASSING!**



***It's 30 seconds out of your life...
it could mean the end of mine!***



A message from the Student
Transportation Association of Alberta
Visit www.staa.ab.ca



SCHOOL BUSES WITH OVERHEAD

Red and Yellow Lights

(With or Without Bus Stop Signs)

- ▶ Yellow lights are flashing:
Prepare to stop
- ▶ Red lights are flashing:
Stop no closer than 20 feet
from the bus
- ▶ Red lights turned off:
Proceed



SCHOOL BUSES WITH OVERHEAD

Red Lights

(With or Without Bus Stop Signs)

- ▶ Red lights are flashing and bus
is stopped:
Stop no closer than 20 feet
from the bus
- ▶ When red lights are turned off:
Proceed



ALL SCHOOL BUSES

Yellow Lights

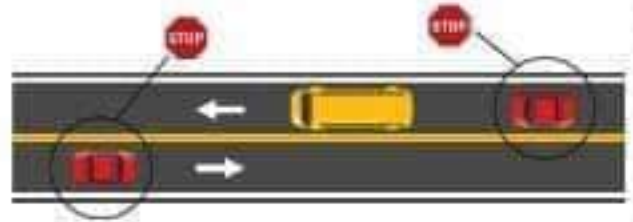
- ▶ Yellow hazard warning lights
are flashing:
Proceed with caution



1

Two-lane roadway:

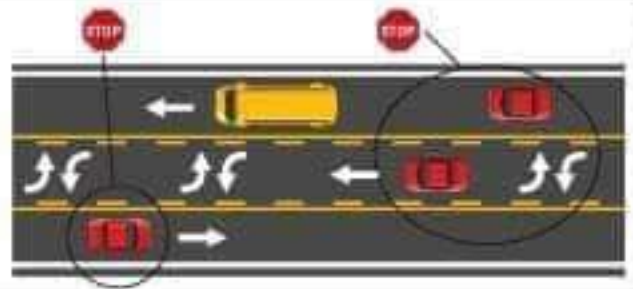
When school bus stops for passengers, all traffic from both directions must stop!



2

Two-lane roadway with a center turning lane:

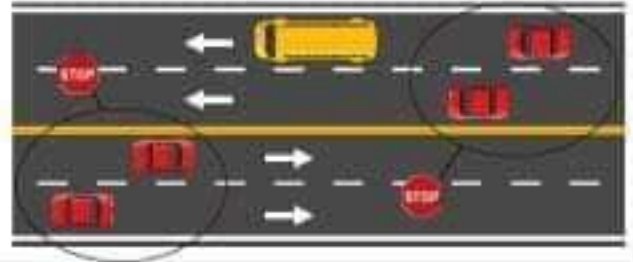
When school bus stops for passengers, all traffic from both directions must stop!



3

Four-lane roadway without a median separation:

When school bus stops for passengers, all traffic from both directions must stop!



4

Divided highway of four lanes or more with a median separation:

When school bus stops for passengers, only traffic following the bus must stop.

